

The Multi-Functional Electric storage unit, or MFE, is a Tier 3 energy storage unit that stores Industrial Craft EU. The MFE is capable of storing up to 4,000,000 EU and accept a ...

Energy and Wiring; Machines; Materials; Nuclear Reactor; Tools; Community. Recent blog posts; Insights; All Pages; ... Energy Storage Category page. Sign in to edit ...

- The transformer upgrade will allow the lower tier benches to accept higher input energy, including energy crystals, lappacks, and lapotrons in the power input slot. Up to 3 may be used, depending on the bench's tier. - The energy storage ...

The Multi-Functional Storage Unit, or MFSU, is a Tier 4 energy storage unit that stores EU (IndustrialCraft 2). The MFSU is capable of storing 40,000,000 EU and outputs 2048 ...

Items and machines in IndustrialCraft 2 are grouped into tiers based on the maximum EU it can output or receive per tick (EU/t). Powering a machine or storage unit with ...

IndustrialCraft 2 (or IC2 for short) is a mod which adds many electrical machines, blocks, and items. It revolves around automation and modernization of many aspects of the ...

The Multi-Functional Storage Unit, also known as an MFSU, is an IndustrialCraft Energy Storage Device that stores 10,000,000 EU. It accepts a maximum of 512 EU/packet, or HV (High Voltage). It also outputs 512 EU/t, at ...

The Cables are the primary means of transferring EU from one device to another. There are several different types of cable, each type made from different metals, and each ...

These neat little pieces of future technology are the commonly used energy storage device for all REALLY advanced Machines.. Yes, they can even get more advanced than the ...

The RE Battery is the most basic EU storage item in IC&#178;, with storage of 10K EU and a transfer rate of 100 EU/t. An RE Battery - for rechargeable, as opposed to the Single ...

This page is about the IndustrialCraft 2 Generator. For other uses, see Generator. The Generator is a machine added by IndustrialCraft 2. It is the most basic machine for ...

The Energy Crystal is an energy storage device for Advanced Machines, such as a Mining Laser. Energy Crystals can hold up to 100,000 EUs. When first crafted, they have no ...

The BatBox is the most basic of several energy storage devices from Industrial Craft. It is able to store up to 40,000 EU (10 coal worth of energy) and can accept a maximum packet size of 32 EU from each of the 5 input faces ...

The Geothermal Generator produces EU by consuming lava, which may be supplied by buckets, Universal Fluid Cells (or consumable Lava Cells in older versions), or ...

Industrial Craft 2: The Energy Storage Upgrade is one of 3 Upgrades that can be placed in IndustrialCraft machines. ... The Energy Storage Upgrade can be used in ...

EU - Energy Unit is the measure of energy used by IC. It is most similar to the SI derived unit Joule. EUs are "produced" by generators, stored by mobile units like an RE Battery ...

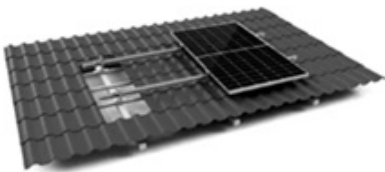
EU, which stands for Energy Unit, is the measurement of energy production, consumption, transmission and storage in IndustrialCraft. These units are not similar to actual real life electricity; they are "virtual" items that can ...

The Energypack is a backpack which can store energy and recharge held electric tools. It is power tier 3 (it can only be charged in an MFE or MFSU) and can hold up to 2 ...

\* „? \*,",? \*, ...

The storage monitor allows you to remotely monitor an energy storage unit. It will start emitting redstone when the power level falls below a certain threshold, and stop when the ...

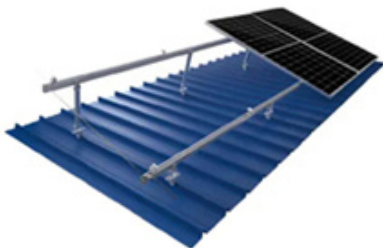
Web: <https://www.bardzyndzalek.olsztyn.pl>



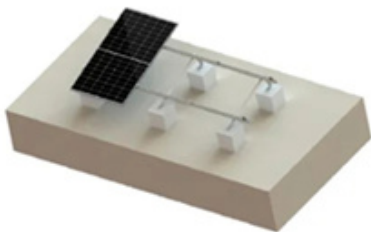
TILE ROOF SOLAR MOUNTING SYATEM



STANDING SEAM ROOF SYATEM



ADJUSTABLE TILT FLAT ROOF SYATEM



TRIANGLE FLAT ROOF SYATEM